

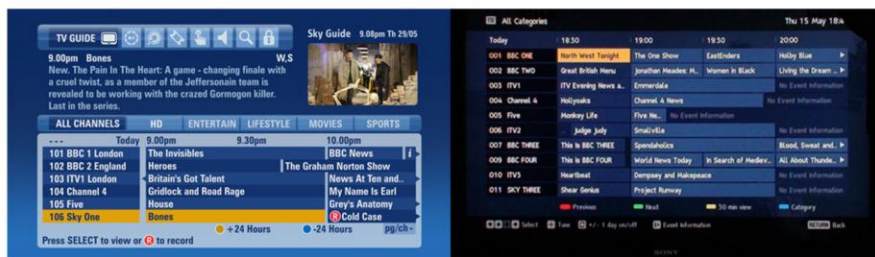


Electronic Program Guide - ATSC (EPG-A)

HIGHLIGHTS

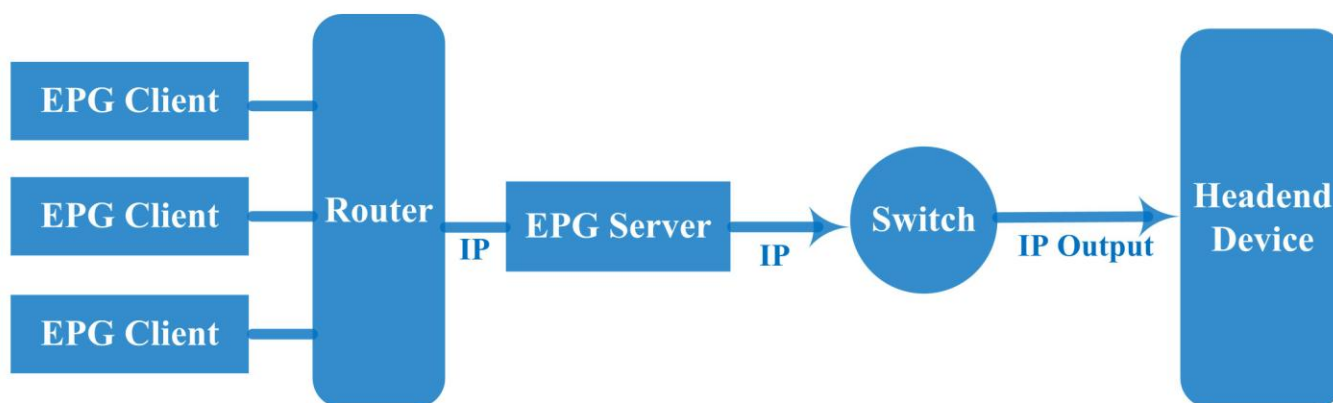
- IP Output Support
- Client/Service System mode
- Program schedule importing directly
- Maximum 2044 TS support
- Maximum 69905 Program Support
- Maximum 16 days EIT events support
- Friendly user interface
- Self-define events formats Support
- Base on ATSC Standard

EPG is an important application in the digital interactive TV. Like audio and video programs, it is a basic business, which is regarded as the symbol of digital TV. EPG provides rich colorful program forecasting information and convenient searching engine, through which subscribers could browse and search program information conveniently; meanwhile, they could also find much more program information, such as program brief introductions, actors' information and program fractions, etc.

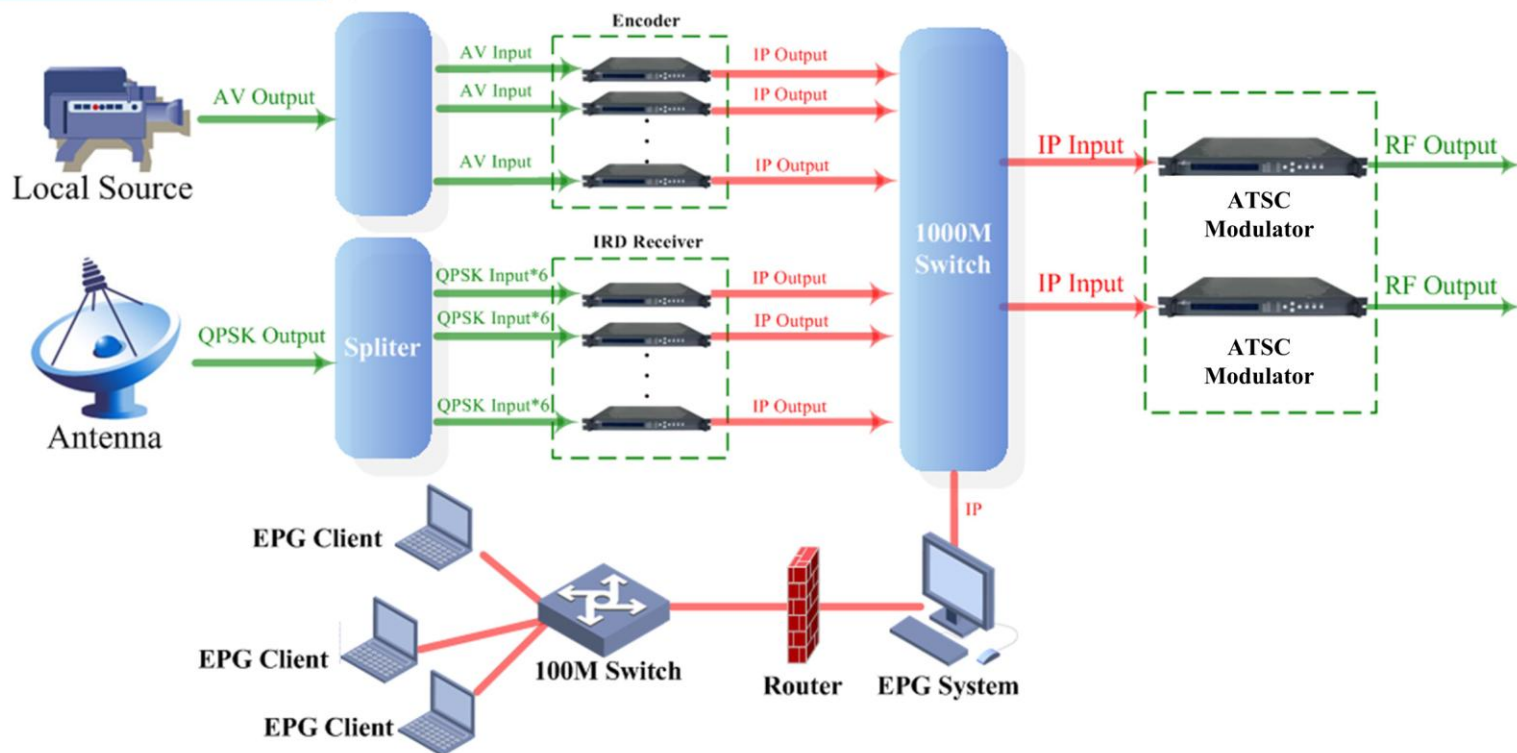


Dexin EPG is a fully-complying ATSC standard system for uniform distribution and collaboration of DTV broadcasting network resources. It supports PSI/SI standard tables, standard descriptors, private descriptors, private application data generation and scheduling for broadcasting.

Inner Principle

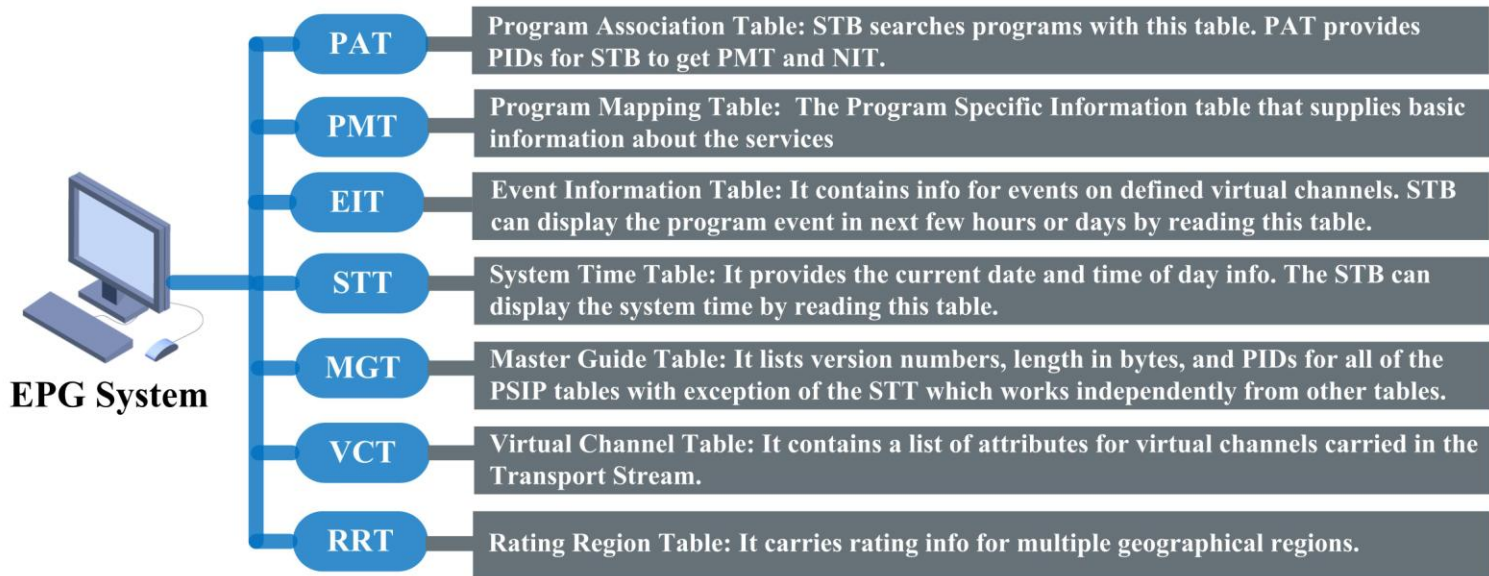


How To Use It



EPG Function Explain

Main Function



Hardware Requirement

Software Requirement

EPG Server Configuration			
CPU:	2.5GHz and above (recommended)	Function Software:	EPG Software
Memory:	4 GB and above	Database:	SQL Server 2005, SQL Server 2008
Hard disk:	the free space is 20 GB and above	Operation System:	Windows server 2003, windows server 2008 (recommended)
Network card:	1GB Network Card 100M Network Card (optional)		

EPG Client Configuration			
CPU:	2.0GHz and above (recommended)	Function Software:	EPG Client Software
Memory:	2 GB and above	Operation System:	Windows XP (SP3 Above), Windows7 Windows Vista
Hard disk:	the free space is 2 GB and above		
Network card:	100M or 1GB Network Card		